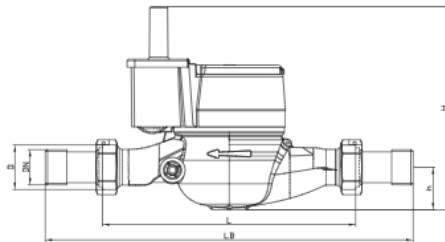
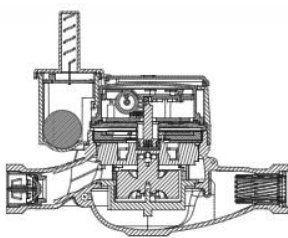


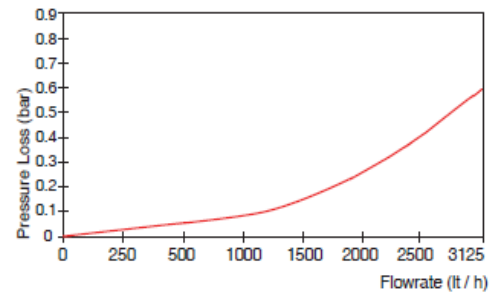
LoRa Water Meter without Valve Control IMI -4MJ

GENERAL DETAILS

- MID certified -suitable for potable water
- IP68 protected electronic circuit and mechanical meter
- Complete water consumption management
- Supports LoRaWAN Class A protocol and Wireless MBUS protocol
- Supports Simultaneous support of LoRaWAN and Wireless MBUS protocols (optional)
- Both Lora and FSK modulation due to integrated Lora module-chipset
- Selectable Frequency Band EU 863-870 MHz
- 3.6V Lithium battery
- Compact design. Meter and communication module in the same housing
- Star wheels indicator ready for optical pulse read-out
- Receive meter readings remotely
- Smart Grid platform ready



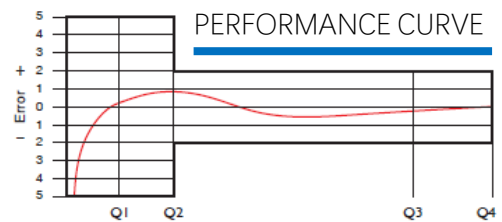
PRESSURE LOSS CURVE



DEVICE DIMENSIONS

Nominal Diameter	DN	15	20 mm
Width	B	85	84.5 mm
Length with connections	LB	270	270 mm
Connecting Diameter	D	G 3/4	G1 B
Length	L	190	190 mm
Total overall meter height	H	152	154 mm
Axis height	h	33	32 mm
Unit weight		1.18	1.27 kg

PERFORMANCE CURVE



PERFORMANCE DATA

Overload flowrate	Q4	m ³ /h	3.125								
Permanent flowrate	Q3	m ³ /h	2.5								
Transitional flowrate	Q2	m ³ /h	0.040	0.032	0.025	0.020	0.016	0.1	0.08	0.0635	0.05
Minimum flowrate	Q1	m ³ /h	0.025	0.02	0.0156	0.0125	0.010	0.0625	0.05	0.03968	0.0312
Q3/Q1 (M1-001 OIML R49)	-		100	125	160	200	250	40	50	63	80
Mounting on the network			Horizontal				Vertical				
Initial flowrate Qi		l/h	5								
Pressure loss		bar	0.6								
Maximum working pressure		bar	16								
Maximum working temperature		°C	50								
Smallest reading resolution		m ³	0.00005								