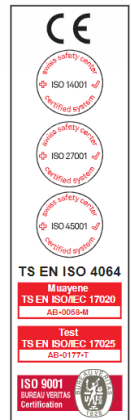


NB-IoT Water Meter with Valve Control IMI -NB3VVL

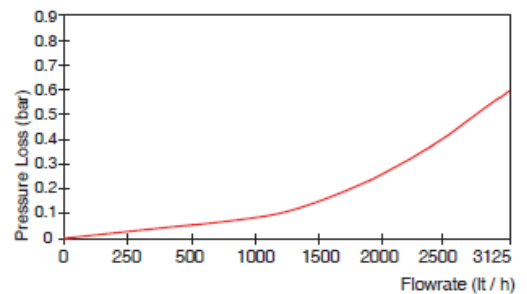
GENERAL DETAILS

- Both analogue and digital measurements
- CE certified
- MID certified -suitable for potable water
- IP68 protected electronic circuit and mechanical meter
- Nb-IoT bidirectional communication (band 20)
- Check valve disabling bi-directional water flow
- 3.6V Lithium replaceable battery
- 10 years of battery life*
- LCD display with high-contrast back light (64x20 mm)
- Suitable for cold water and temperatures up to 50°C
- Leakage control system,
- AES-128 encryption protected
- Remote valve control (open / close)
- Embedded step valve with remote control
- Receive meter readings remotely
- Cicicom Smart Grid platform ready
- Local management with RFID cards
- Fitting security cover and electronic sensor
- Alerts: tamper, vandalism, low battery, battery removal, closed valve

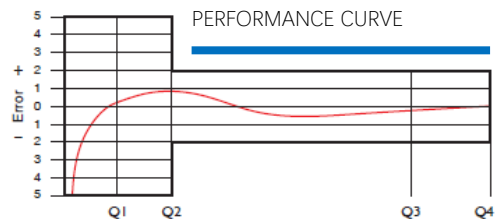
*Under acceptable network conditions (e.g., good signal, no disconnections, etc.)



PRESSURE LOSS CURVE



PERFORMANCE CURVE



DEVICE DIMENSIONS

Nominal Diameter	DN	15	20	
Width	B	111	111	mm
Length with connections	LB	270	270	mm
Connecting Diameter	D	G 3/4	G1	B
Length	L	190	190	mm
Total overall meter height	H	141	141	mm
Axis height	h	27	27	mm
Unit weight	kg	1.70	1.70	kg

PERFORMANCE DATA

Nominal Diameter	DN	15/20	20
Overload flowrate	Q4	m ³ /h	3.125 5
Permanent flowrate	Q3	m ³ /h	2.5 4
Transitional flowrate	Q2	m ³ /h	0.016 0.0256
Minimum flowrate	Q1	m ³ /h	0.010 0.016
Q3/Q1 (M1-001 OIML R49)	-	≤250	≤250
Initial flowrate Qi	1/h	7	
Pressure loss	bar	0.63	
Maximum working pressure	bar	16	
Maximum working temperature	°C	50	
Maximum registration capacity	m ³	9999/ 99999/ 99999,99/ 99999,999	
Smallest reading resolution	m ³	0.00005	
Mounting on the network	-	horizontal	
Accuracy Class		Class 1 / Class 2	

